

Viking 44.  
The Shortest  
Distance  
Between  
Two Ports.





## Up And Gone.

The Viking 44 from the outside looks like a wave buster with power to get up on plane fast. She is that and more. She'll take you to afternoon cocktails in Bimini and have you back in Miami in time for that important business dinner. The crossing to Catalina is now something to do before lunch. Her powerful twin turbo-charged 6-71's\* lift her on plane quickly, quietly and smoothly. You reach your destination in hours, not days. And you do so in elegance and comfort found only in fine motor yachts.

The Viking 44 designers and craftsmen have combined the muscle and manner of a high performance custom sportsfisherman with the luxury a royal prince expects to find at dockside. The evidence of their skill is heard in the quietness of the cabins, it's seen in the richness of the teak and felt in the stability underfoot.

Climb up on the flybridge and survey this truly livable boat. The helm features instrumentation that is clean and to the point. Every gauge presents itself head-on for inspection and every control is barely a reach away. Invite the crowd up. Ten people can fun n' sun without crowding the skipper.

Climb down to the afterdeck when the sun gets too hot and have a cool one from the wet bar.\* This deck is out in the open but under an optional hardtop, perfect for the "paleface" boater.

Climb aboard the Viking 44 and experience the casual elegance, the effortless acceleration, the excellent stability. There is no rumble or roar. The Viking 44 makes her own statement. She is just up and gone.

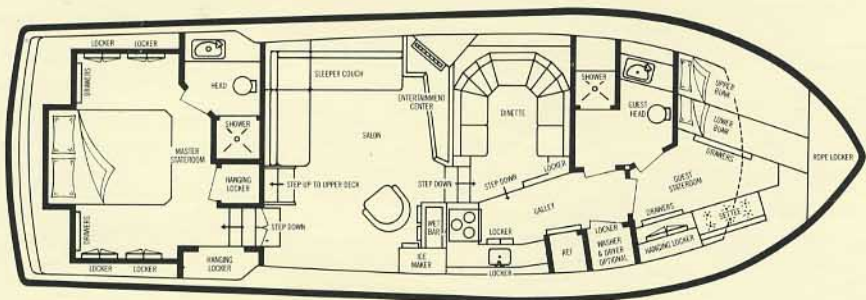


\*Optional items











## Designed With Foresight: She's A Vision Of Grandeur.

If you're particular about beauty and concerned about function, you'll be impressed with the Viking 44.

Step into the spacious salon, the center of accommodation for living and entertainment. It is decorated in the cool colors of the sea so that style and design never clash with function and use. Relax on the convertible couch now, sleep on it later. The wet bar contains its own ice maker\* and the divider between living and dining areas has built-in color TV\* and stereo.

Step down into the L-shaped galley and see how space can be put to work. The full size electric stove, microwave oven,\* stainless steel sink and refrigerator/freezer all seem in perfect harmony when cooking an intimate dinner for two or an excursion for twelve with lunch. Planned efficiency is everywhere on the Viking 44, but the galley is where it counts most.

The U-shaped dinette is built for relaxation and comfort. It's here that your favorite dessert and coffee can be savored or the competition of a Scrabble game can be enjoyed. The guest head is forward down the companionway with another entrance from the guest stateroom.



\*Optional items







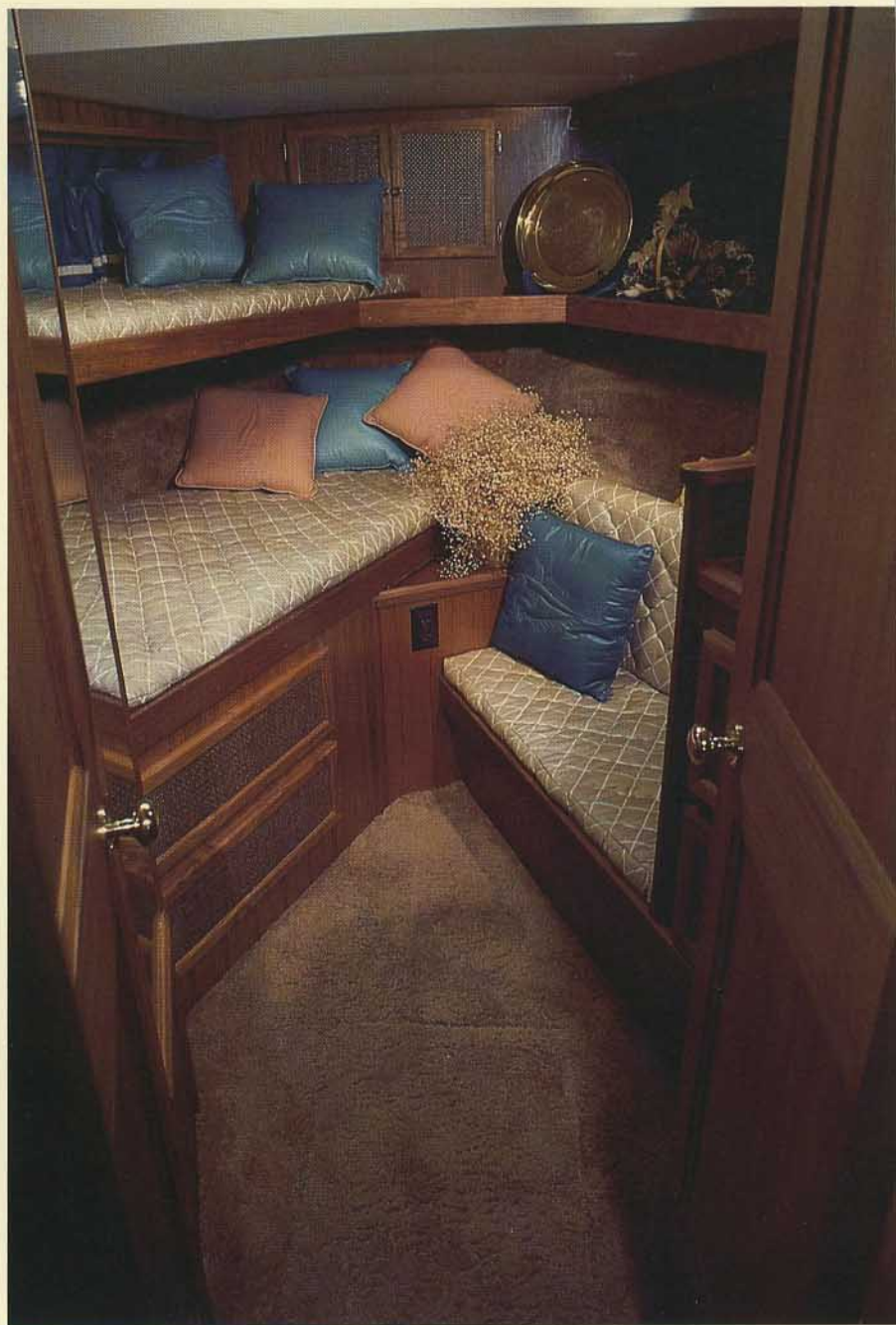
## The Comforts Of Home With The Romance Of The High Seas.

The master stateroom boasts a queensize bed with room left over to walk around. Three windows shed light on this airy and spacious private area with it's credenza for stowage and locker for hanging garments.

The guest quarters have over and under berths instead of the old V bunks and to starboard there's a hanging locker and seating area.

Throughout the 44, finely fitted teak panelling shows the pride taken in the building of this yacht. It is respect for the sea and the seamen that shows in design and follow thru.

The Viking 44 is built by men who know the sea and care about every detail, from incredible acceleration and tracking, to interior ventilation and stateroom design. The new 44 is further evidence of Viking's drive to be America's number one builder of fine yachts.





### DIMENSIONS

Length	44'0"
Beam	15'0"
Draft	3'10"
Freeboard, fwd.	5'8"
Freeboard, aft.	4'4"
Height, w/1 to F/B	12'5"
Height, w/1 to arch	14'6"
Gross weight, approx.	40,000
Fuel capacity, std.	460
Water capacity, std.	180
Headroom	6'6"

### CONSTRUCTION

Hand laid-up molded fiberglass hull, deck, deck house, and flybridge w/end-grain balsa core in hull sides, decks, and cabin top. Solid keel, strakes, and chines.

### MECHANICAL

Engines, Twin 310 hp Detroit Diesel w/reduction gearing  
 Engine alarm system, audible  
 Engine stringers, structural steel channels  
 Mufflers, fiberglass  
 Propellers, 3-blade  
 Rudders, manganese bronze  
 Shafts, stainless steel  
 Struts, manganese bronze  
 Trim tabs  
 Hydraulic steering

### FUEL AND WATER

Fuel lines, flexible aircraft type  
 Fuel manifold, w/filters and cross-over valves  
 Fuel tanks, fiberglass  
 Hot water heater  
 Water connection, dockside w/pressure relief valve  
 Water lines, copper  
 Water system, pressurized  
 Water tank, fiberglass

### ELECTRICAL

Batteries, 12 volt (2) fiberglass box  
 Battery paralleling switch, vapor-proof  
 Battery charger  
 Bilge blowers  
 Bilge pumps, automatic, w/indicator light (3)  
 Bonded electrical system  
 Color coded wiring systems  
 Dockside electrical system, w/two 50' cords  
 Engine room light  
 Generator  
 Horn, dual air  
 Lights, interior, combination 12V & 120V throughout  
 Master control panel, w/12V & 120V circuit breakers  
 AC master control switch  
 Voltmeter, polarity light  
 Navigation lights

### FLYBRIDGE

Compass  
 Covers, Dacron, for instrumentation and helm seat  
 Full instrumentation  
 Hand rails, stainless steel  
 Lockers  
 Seat, pedestal helm  
 Windshield, venturi type

### SALON

Carpeting throughout  
 Cabinets, storage  
 Chair, upholstered  
 Convertible, L-sofa  
 Lighting  
 Stereo system  
 Windows, sliding, w/screens

### GALLEY

Electric range, 3-burner, w/oven  
 Exhaust fan  
 Lighting, indirect  
 Refrigerator/freezer  
 Silverware and utensil drawer  
 Sink, stainless steel

### DINETTE

U-shaped upholstered lounge with table converts to bed

Lockers  
 Storage bins under seats

### MASTER STATEROOM

Carpeting throughout  
 Escape hatch  
 Hanging locker, full length  
 Lighting, indirect  
 Queen-size bed w/mattress (twin beds optional)

### MASTER HEAD

Vanity  
 Electric toilet w/holding tank  
 Stall shower

### FORWARD STATEROOM

Carpeting  
 Hanging locker  
 Storage drawers  
 Upper & lower berths w/storage under

### FORWARD HEAD

Vanity  
 Electric toilet w/holding tank  
 Stall shower

### MISCELLANEOUS

Aft deck fiberglass dodger sheet with teak taffrail  
 Anchor, 25 lb. w/chain & line  
 Bow chocks  
 Bow rails, stainless steel  
 Dock lines  
 Draperies throughout  
 Fire protection system  
 Fire extinguishers (3)  
 Flag staff and ensign  
 Fog bell  
 Life jackets (6)  
 Non-skid decks fore and aft  
 Safety glass, all windows  
 Screens on all opening windows and port lights

For more information see your local Viking dealer or write Viking Yachts, Route 9 and The Garden State Parkway, New Gretna, New Jersey 08224.

